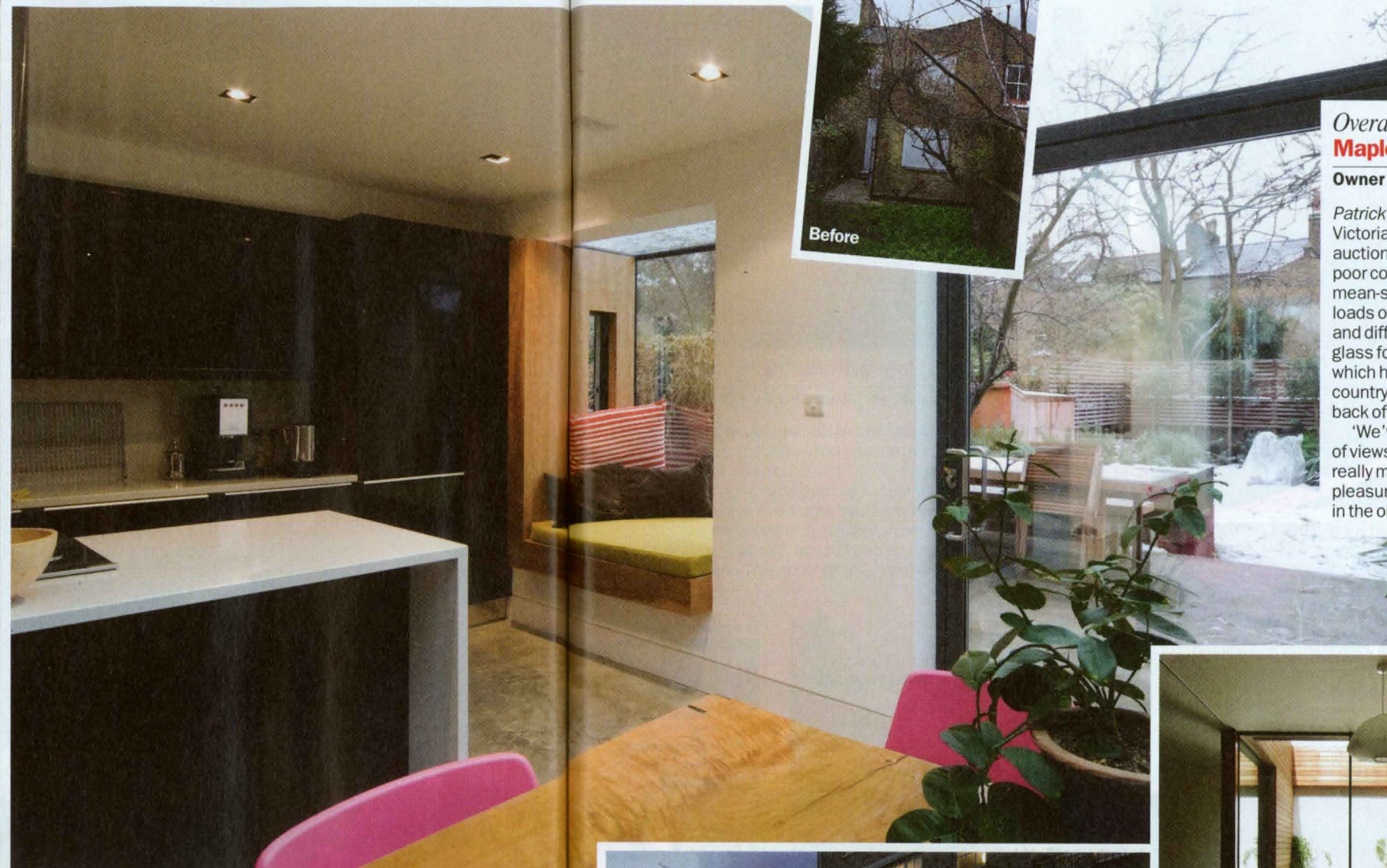


FIRST PLACE
Mapledene Road



Overall winner
Mapledene Road, Hackney

Owner and architect Patrick Michell

Patrick Michell: 'I like what you get from a Victorian terrace but the one I bought at auction was in a right old state. It had a poor connection to the garden and a pretty mean-sized kitchen. We aimed to bring in loads of daylight and use some interesting and different materials, like the sheet of glass for the roof and the concrete floor, which hasn't been done an awful lot in this country. It was really about improving the back of the house.'

'We've created such a nice progression of views with simple materials that are really made by the detailing work. It's a pleasure to come down here every day, sit in the oriel window and read the papers.'

My big fat home improvement!

Last year *Time Out's* 'Don't Move, Improve' competition challenged Londoners to beat the slump with their creativity. **Kimberley Smith** meets the winners. Main photography **Michael Franke**

During the recession 'don't move, improve' has become a mantra for London's home-owners. Faced with an unpredictable housing market and the menace of stamp duty, Londoners have put moves on hold and used the money they have to make changes to their existing homes.

Last year *Time Out* teamed up with New London Architecture for 'Don't Move, Improve', a competition to find the best and most innovative home developments in the capital.

Over the next three pages we are proud to reveal the overall winner and runners-up, as well as the category winners. We will also hear from the award-winners: why did they do it? How did they do it? Are they happy with the results?

To coincide with the winners' work being revealed in *Time Out*, this Saturday, January 23, there's a special day of free 'Don't Move, Improve!' public events at NLA (The Building Centre, 26 Store St, WC1E 7BT), with free

architect surgeries, lectures from architects and designers and advice on being more green. And the event doesn't stop at NLA. Many leading furniture retailers around Tottenham Court Road, including Molteni & C Dada, BoConcept, Heals and Lombok, will be offering design advice, promotions and discounts for 'Don't Move, Improve!' visitors on the day. Register at www.newlondonarchitecture.org or call 7636 4044.

THIRD PLACE



Hidden House, Camden

Owner Nigel and Chantal Dyble; architects Edgley Design

Nigel Dyble: 'With a family of four in a small flat and my wife planning to return to work, we wanted to get a nanny but had no living space available. We also have family overseas and wanted more room for their visits.'

'Our main criteria were maximising space without detracting from everyday living. We didn't want to lose our enjoyment of the garden but if anything, the conversion has amplified it as the glass courtyard emerging from the centre of the garden is quite a spectacle.'

'It's very flexible due to hidden sliding doors that fold away. It's surprisingly light, warm and very functional. Everything is bespoke, sleekly designed and a nice blend of looking cool yet being cosy.'

SECOND PLACE



Most Sustainable Design Cross Street, Islington

Owner Nick Taylor and Haewon Hwang; architects Paul Archer Design

Nick Taylor and Haewon Hwang: 'The building was a very inefficient use of space, an old Victorian pub divided into dark, low-ceilinged flats.'

'The primary objective was for a new home that was practical and efficient but simultaneously light and open. We were very constrained by the existing building which led to the creation of a whole new house below the other.'

'The whole building is super-insulated with "heat recovery" and the kitchen naturally vented by an electric system underneath the central island.'

'We wanted to create a space that had a continuous flow of circulation from room to room, floor to floor and from inside to outside. We're very happy with it; the outdoor shower under the kitchen is a particularly nice feature.'